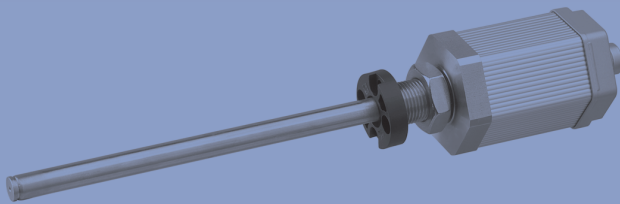


Transducer up to 4500 mm non-contacting absolute

Series TMI



Special features

- rod style integrable transducer
- non-contact magnetostrictive NOVOSTRICTIVE® measuring process
- high-dynamic serial "DyMoS" interface with data transmission interface
- non-contact guiding with ring-shaped position marker
- unlimited mechanical life
- no velocity limit for position marker
- outstanding linearity performance up to 30 µm
- resolution up to 0.001 mm regardless of stroke length
- low temperature coefficient <20 ppm/K
- insensitive to shock and vibration
- optionally cable or plug connection
- operating pressure up to 350 bar
- screw flange M18x1.5 or 3/4"-16UNF
- analogue interfaces with teach-in function

Transducers employing the NOVOSTRICTIVE® non-contacting magnetostrictive measuring process for direct, precise and absolute measurement of travel and length in control, positioning and measuring technology.

The measurement is accomplished using a passive position marker which can be moved as a free-floating element. The non-contact coupling version makes installation even simpler, and the wear-free operation means unlimited mechanical life expectancy and unlimited traverse speed of the position marker and permits stroke lengths up to 4500 mm.

The temperature coefficient of the transducer is extremely low thanks to the measuring principle, design and selected materials.

The high mechanical ruggedness of the transducer combined with the underlying measuring technique mean that the system is highly resistant to shock and vibration.

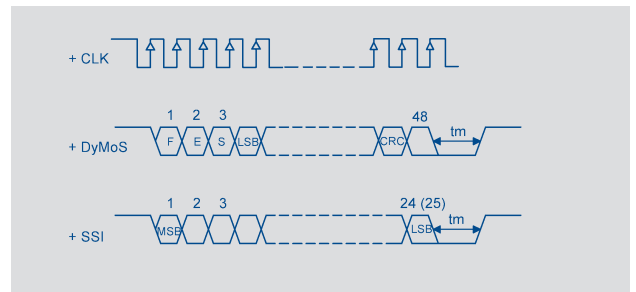
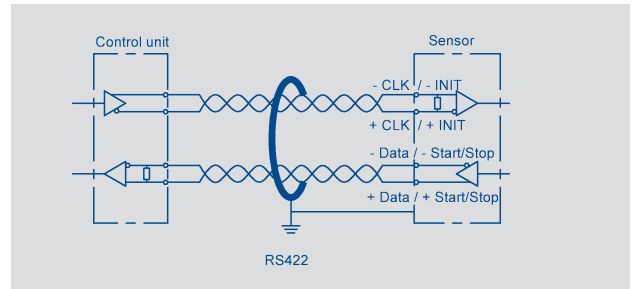
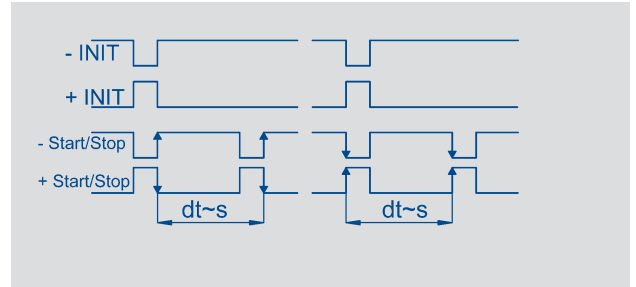
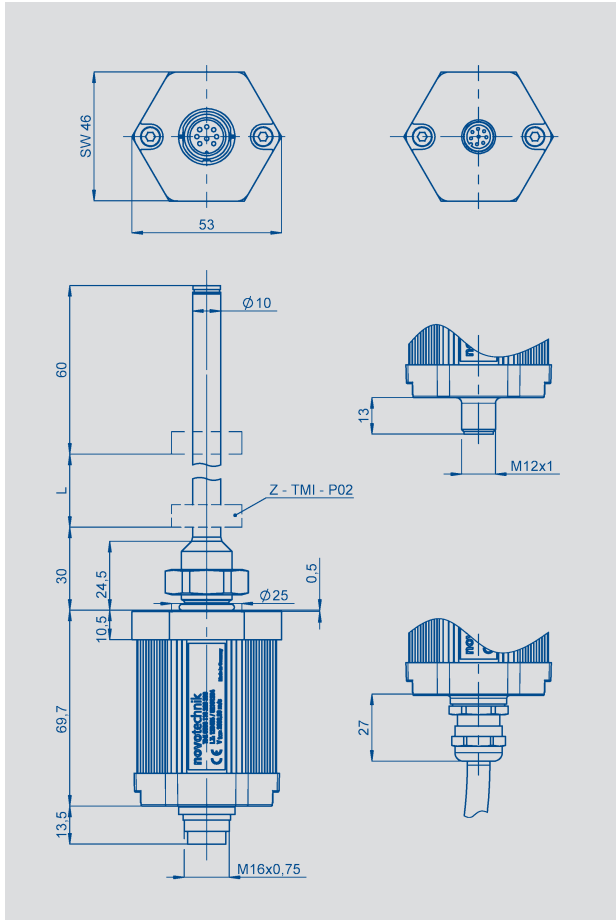
The rod-shape of the transducer allows integration in the pressurized zone of hydraulic and pneumatic cylinders.

The contactless ring-shaped magnet ensures simple fitting of the transducer.

A sophisticated ASIC in the transducer provides for standard absolute output signals. In addition to the familiar interfaces such as the synchronous serial interface (24 or 25 bits), the Start/Stop pulse interface and analogue voltage or current interfaces, a highly dynamic serial "DyMoS" interface with data transfer monitoring is offered. The advantages of conventional interfaces and bus interfaces have been combined in this Novotechnik "DyMoS" interface. In addition to the position value, the "DyMoS" interface also allows the actual traverse velocity to be sent. The pulse interface also allows fully tolerated processing of both edges of the Start/Stop signal. In case of damage of the housing with a special repair-set the replacement of the electronic is possible without demounting of the rod out of the pressure area.

As an option, the transducer can also be operated with multiple position markers. Additional interfaces see separate data sheet.

Description	
Housing	Anodized aluminium, Rod: stainless steel
Mounting	Bushing M18x1.5 for screw plug hole per ISO6149 Bushing 3/4"-16UNF for screw plug hole per SAE J475
Position marker	Ring position marker, plastic
Measuring technique	Non-contact, magnetostrictive "NOVOSTRICTIVE"
Electrical connection	8-pin round connector, shielded, M12x1 8-pin round connector, shielded, IEC130-9 8-conductor cable, shielded, 1 m long
Electronics	Integrated SMD with ASIC Connect cable shield to housing



Connector pin code 101, 102	Cable colors code 201, 203, 205	Connector with cable EEM33-86, EEM33-87	Start-Stop pulse interface	SSI interface	"DyMoS" interface	Analogue interfaces
PIN 1	YE	WH	+ INIT	+ Clk	+ Clk	0(4)...20 mA
PIN 2	GY	BN	+ Start/Stop	+ Data	+ Data 1	Signal GND
PIN 3	PK	GN	- INIT	- Clk	- Clk	+10...0 VDC
PIN 4	RD	YE	open	open	- Data 2	open
PIN 5	GN	GY	- Start/Stop	- Data	- Data 1	0...+10 VDC
PIN 6	BU	PK	supply voltage GND	supply voltage GND	supply voltage GND	supply voltage GND
PIN 7	BN	BU	+24 VDC	+24 VDC	+24 VDC	+24 VDC
PIN 8	WH	RD	open	open	+ Data 2	open

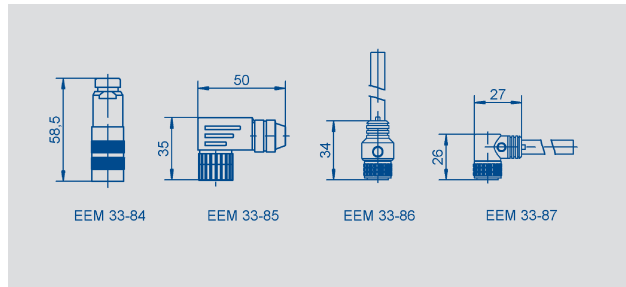
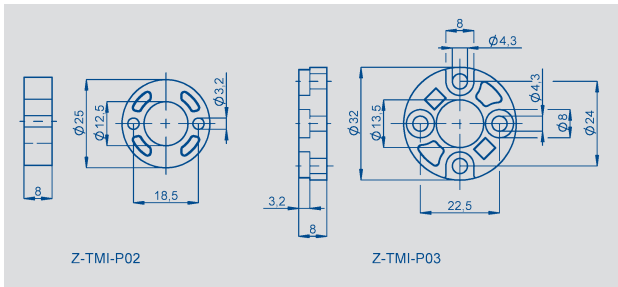
Additional interfaces see separate data sheets.

The unipolar analogue interfaces includes standard teach-in function via the electrical connection.

Type designations	TMI xxxx 00x 1xx xxx Start-Stop pulse interface	TMI xxxx 00x 2xx xxx Synchronous serial interface	TMI xxxx 00x 3xx xxx "DyMoS" interface	TMI xxxx 00x 4xx xxx Analogue interfaces	
Electrical Data					
Defined electrical range (dimension L)	from 0050 to 4500	from 0050 to 4500	from 0050 to 4500	from 0050 to 4500	mm
Absolute linearity	± 50 µm	≤ ± 30 µm	≤ ± 30 µm	≤ ± 0,02 % (min. 50 µm)	
Output signal	impuls	digital	digital	0...10 VDC (load ≥10 kΩ) 0 (4)...20 mA (burden ≤500Ω)	
Resolution	≤ 2 µm	≤ 1 digit	≤ 1 digit	≤ 0,01 %	
Reproducibility	≤ 6 µm	≤ 2 digits	≤ 2 digits	≤ 0,02 %	
Hysteresis	≤ 4 µm	≤ 1 digit	≤ 1 digit	≤ 0,01 %	
Supply voltage	24 ± 20 % reverse polarity protected	24 ± 20 % reverse polarity protected	24 ± 20 % reverse polarity protected	24 ± 20 % reverse polarity protected	VDC
Supply voltage ripple	max. 10 %	max. 10 %	max. 10 %	max. 10 %	Vpp
Current draw	≤ 80 typical	≤ 80 typical	≤ 100 typical	≤ 100 typical	mA
Output up date rate	≤ 16 (depending on length)	≤ 16	≤ 16	≤ 2	kHz
Shielding	connected to housing	connected to housing	connected to housing	connected to housing	
Temperature coefficient	≤ 20	≤ 20	≤ 20	30	ppm/K
Humidity coefficient	≤ 20	≤ 20	≤ 20	20	ppm/%RH
Overvoltage protection	40 (Transzorb protection diodes)	40 (Transzorb protection diodes)	40 (Transzorb protection diodes)	40 (Transzorb protection diodes)	VDC
Revers voltage	yes	yes	yes	yes	
Insulation resistance (500 V, 1 bar, 2 s)	≥ 10	≥ 10	≥ 10	≥ 10	MΩ
Mechanical Data					
Dimensions	see drawing	see drawing	see drawing	see drawing	
Environmental Data					
Operating temperature range	-40...+85	-40...+85	-40...+85	-40...+85	°C
Storage temperature range	-40...+120	-40...+120	-40...+120	-40...+120	°C
Operating humidity range	0...100	0...100	0...100	0...100	%R.H.
Shock per DIN IEC68T2-27	100 (11 ms)	100 (11 ms)	100 (11 ms)	100 (11 ms)	g
Vibration per DIN IEC68T2-6	20 (5...2000 Hz, A _{max} = 0,75 mm)	20 (5...2000 Hz, A _{max} = 0,75 mm)	20 (5...2000 Hz, A _{max} = 0,75 mm)	20 (5...2000 Hz, A _{max} = 0,75 mm)	g
Protection class per DIN 40050 IEC 529 with screwed connector	IP67	IP67	IP67	IP67	
Mechanical data when used with floating position marker					
Pressure rating					
Working pressure	≤ 350	≤ 350	≤ 350	≤ 350	bar
Pressure peaks	≤ 600	≤ 600	≤ 600	≤ 600	bar
Burst pressure	> 800	> 800	> 800	> 800	bar
Traverse speed of position marker	unlimited	unlimited	unlimited	unlimited	ms ⁻¹
Traverse acceleration of position marker	unlimited	unlimited	unlimited	unlimited	ms ⁻²
Life	unlimited (mechanical)	unlimited (mechanical)	unlimited (mechanical)	unlimited (mechanical)	move- ments
Standard defined electr. range (dimension B)	0050 up to 1000 in 50 mm steps, 1000 up to 2000 in 100 mm steps, 2000 up to 4500 in 250 mm steps; other lengths in 10 mm steps on request				
CE-conformity					
Emissions	RF noise field strength EN 55011 Group 1 Class A				
Noise immunity	ESD EN 61000-4-2 Radiated immunity EN 61000-4-3 BURST EN 61000-4-4 Conducted disturbances induced by RF fields EN 61000-4-6				

Novotechnik
 Messwertaufnehmer OHG
 Postfach 4220
 73745 Ostfildern (Ruit)
 Horbstraße 12
 73760 Ostfildern (Ruit)
 Tel. +49 711 44 89-0
 Fax. +49 711 44 89-150
 info@novotechnik.de
 www.novotechnik.de

© 03/2006
 Art.-Nr.: 062 701
 Printed in Germany



Ordering specifications

Electrical Interface

- 1 Standard: Impuls Interface, supply voltage 24 VDC $\pm 20\%$
- 2 Optional: Synchronous Serial Interface, supply voltage 24VDC $\pm 20\%$
- 3 Optional: DyMoS Interface, supply voltage 24 VDC $\pm 20\%$
- 4 Optional: Analogue Interface, supply voltage 24 VDC $\pm 20\%$

Output signal Impuls Interface 1XX

- 1 Standard: Start Stop Signal (P) (M)
- 2 Alternative: Measuring time / impuls range (L)

Output signal Synchronous Serial Interface 2XX

- 1 Standard: 24 Bit
- 2 Alternative: 25 Bit

Output signal DyMoS Interface 3XX

- 1 Standard: Pos. 1 + Vel. 1
- 2 Alternative: Pos. 1 + Pos. 2
- 3 Optional: (Pos. 1 + Vel. 1) and (Pos 2 + Vel.2) two channel

Output signal Analogue Interface 4XX

- 1 Standard: Voltage output
- 2 Optional: Current output

Impuls Interface Start Stop Signal 11X

- 4 Standard: Variable for 1 to 3 PG

Impuls Interface measuring time / impuls range 12X

- 1 Standard

Synchronous Serial Interface 2XX

- 1 Standard: Binary Code with resolution 5 μm
- 2 Alternative: Gray Code with resolution 5 μm

DyMoS Interface 3XX

- 1 Standard: Binary Code with resolution 5 μm

Analogue Interface voltage output 41X

- 1 Standard: 0 VDC...10 VDC and 10 VDC...0 VDC
- 2 Alternative: 0 VDC...10 VDC (Pos. 1 + Pos. 2)

Analogue Interface current output 42X

- 1 Standard: 0 mA...20 mA
- 2 Alternative: 20 mA...0 mA
- 3 Alternative: 4 mA...20 mA
- 4 Alternative: 20 mA...4 mA

Electrical connection

- 101 Alternative: 8 pin round connector IEC130-9
- 102 Standard: 8 pin round connector M 12x1
- 201 Alternative: NT standard cable 1 m
- 203 Optional: NT standard cable 3 m
- 205 Optional: NT standard cable 5 m

Required accessories

Ring position marker
 Z-TMI-P02, Art.No. 005652;
 Z-TMI-P03, Art.No. 005653;
 Other pos. marker on request

Recommended accessories

Connector IEC 130-9,
 EEM 33-84, IP67,
 Art.No. 005627;
 Angled connector IEC130-9,
 EEM 33-85, IP67,
 Art.No. 005628;
 Connector M12x1, 2 m cable,
 EEM 33-86, IP67,
 Art.No. 005629;
 Angled connector M12x1,
 2 m cable, EEM 33-87, IP67,
 Art.No. 005630;
 Connector with longer cable
 length on request

Available on request

Standard cable, 10 m
 SSI resolution 1 μm
 DyMoS resolution 1 μm
 Specific connectors
 Bipolar voltage interface
 Special flanges and offsets
 Field bus interface

Important

Avoid equalizing currents in
 the cable shield caused by
 potential differences.

Subject to change.

T M I 0 8 0 0 0 0 2 1 1 1 1 0 2

Series

Defined electr. range
 Several standard
 lengths from 0050 to
 4500 mm

Mech. configuration

- 002 Standard: screw flange M 18x1.5
- 003 Alternative: screw flange 3/4"-16UNF